



# KT-FLED100-R1A-UNV-8CSB-VDIM

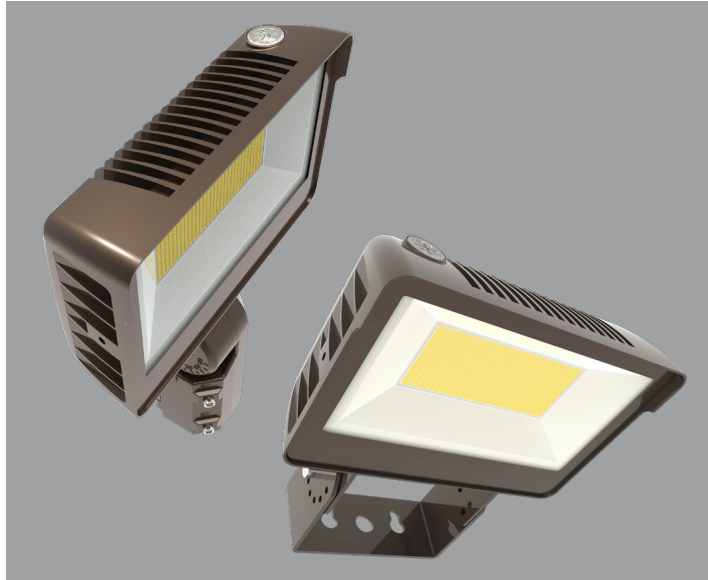
## COMPACT 100W GENERAL-PURPOSE LED FLOOD LIGHT

**DESCRIPTION**

Compact 100W General-Purpose LED Flood Light | 120–277V Input | 3000–5000K | Bronze Housing | Multiple Mounting Options

**APPLICATION**

Building Mount or Ground Mount for outdoor illumination (landscapes, display signage, loading docks, building façades, pathways, parking areas, and other general site lighting requirements)



**PRODUCT FEATURES**

- Uniform, wide flood design (NEMA 7h x 7w distribution pattern)
- Heavy-duty, die cast aluminum housing featuring built-in glare visor and tempered glass lens
- Powered by Keystone 0–10V dimming LED drivers
- Keystone Color Select Technology: Adjustable CCT (3000K, 4000K, or 5000K)
- Built-in dusk-to-dawn photocell behind translucent 3/4" threaded plug with anti-yellowing agent
- Heavy-duty slip fitter mount and trunnion mount options included
- Ambient operating temperature: –20°C/–4°F to 45°C/113°F
- UL listed for wet locations, IP65
- 0–10V dimming, 10% min
- Power Factor: >0.95
- THD: <20%
- LED chip lifetime: L70 >100,000 hrs @ 25°C/77°F ambient fixture temp
- Meets FCC Part 15, Part B, Class A standards for conducted and radiated emissions

**ELECTRICAL SPECIFICATIONS**

Catalog Number	Wattage	Lumens	Dimming	CCT*	Efficacy	CRI	Housing Color	Mounting	Input Voltage	Rated Life	Legacy Equivalent
KT-FLED100-R1A-UNV-8CSB-VDIM	100W	12200 lm	0–10V	3000K	122 lm/W	>80	Bronze	Universal: 2 3/8" Slip fitter or trunnion	120–277V	50,000 hrs	400W MH
		14300 lm		4000K	143 lm/W						
		13400 lm		5000K	134 lm/W						

\* Color Uniformity: CCT (Correlated Color Temperature) range as per guidelines outlined in ANSI C78.377-2017

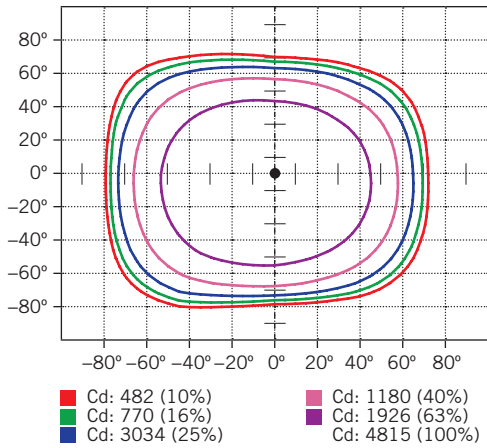


# KT-FLED100-R1A-UNV-8CSB-VDIM

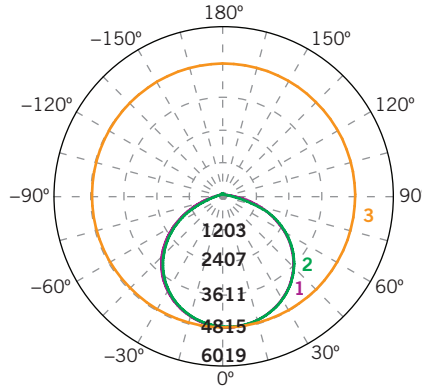
## COMPACT 100W GENERAL-PURPOSE LED FLOOD LIGHT

### PHOTOMETRIC SPECIFICATIONS

#### ISOCANDELA PLOT



#### LUMINOUS INTENSITY DISTRIBUTION



Average diffuse angle (50%): **114.2°**

- 1 Violet C0-C180
  - 2 Green C90-C270
  - 3 Orange G2
- Unit: cd

#### FLUX DISTRIBUTION

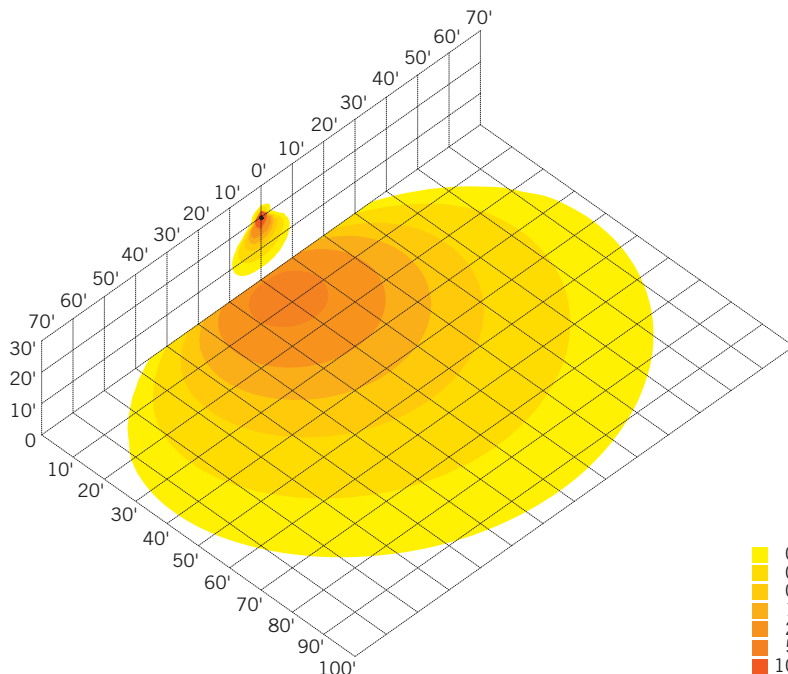
Zone	Lumens	% Luminaire
<b>Forward Light</b>	6,890 lm	51.7%
0°-30°	1,901 lm	14.3%
30°-60°	3,804 lm	28.5%
60°-80°	1,156 lm	8.7%
80°-90°	28 lm	0.2%
<b>Back Light</b>	6,331 lm	47.5%
0°-30°	1,864 lm	14.0%
30°-60°	3,550 lm	26.6%
60°-80°	899 lm	6.7%
80°-90°	17 lm	0.1%
<b>Up Light</b>	106 lm	0.8%
90°-100°	6 lm	0.0%
100°-180°	100 lm	0.8%

BUG* Rating	
<b>Asymmetrical Luminaire Types</b>	
Type I, II, III, IV	B3 U3 G2
<b>Quadrilateral Symmetrical Luminaire Types</b>	
Type V, Area Light	B3 U3 G1

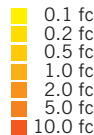
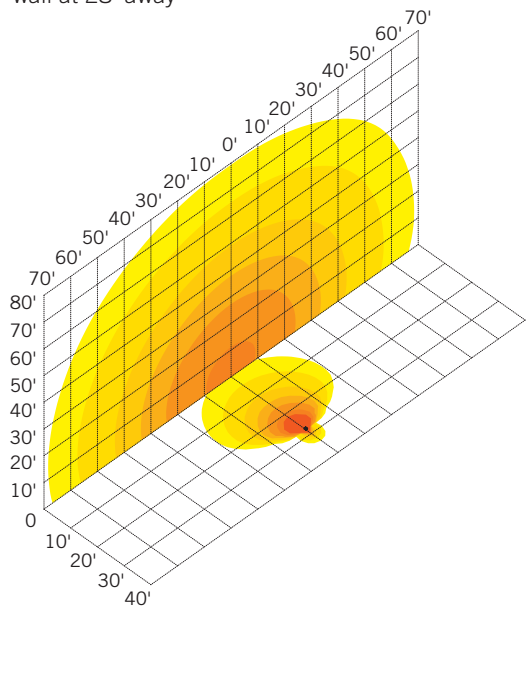
\* Backlight, Uplight, Glare

#### LIGHT DISTRIBUTION PATTERNS (Isometric view from above)

Building exterior mounted at 20',  
30° below horizontal



Ground mounted at 6' above ground,  
10° above horizontal, shining towards building exterior  
wall at 28' away

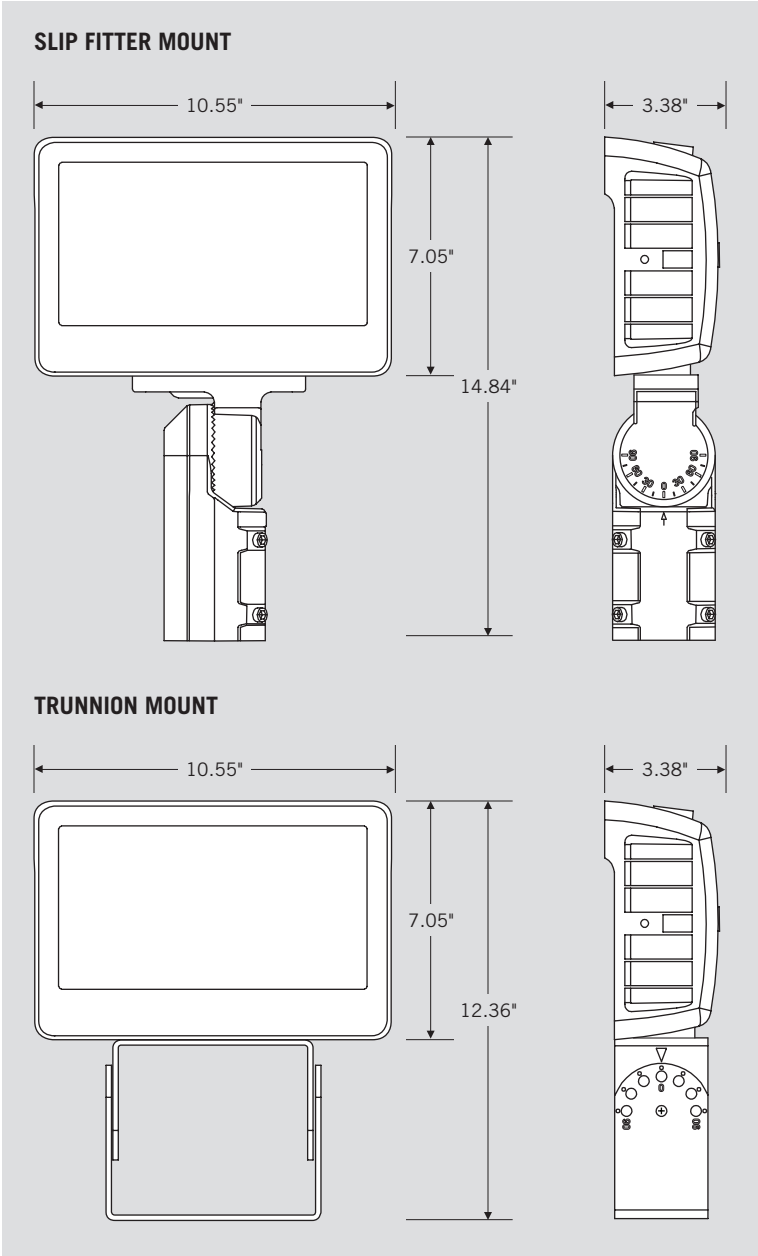




# KT-FLED100-R1A-UNV-8CSB-VDIM

COMPACT 100W GENERAL-PURPOSE LED FLOOD LIGHT

## PHYSICAL SPECIFICATIONS



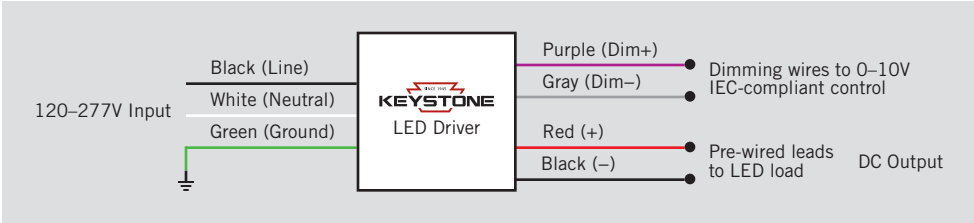


# KT-FLED100-R1A-UNV-8CSB-VDIM

## COMPACT 100W GENERAL-PURPOSE LED FLOOD LIGHT

### GENERAL SETUP INSTRUCTIONS

#### GENERAL WIRING DIAGRAM



**Caution:** Before installing, make certain that AC power to the fixture is off.

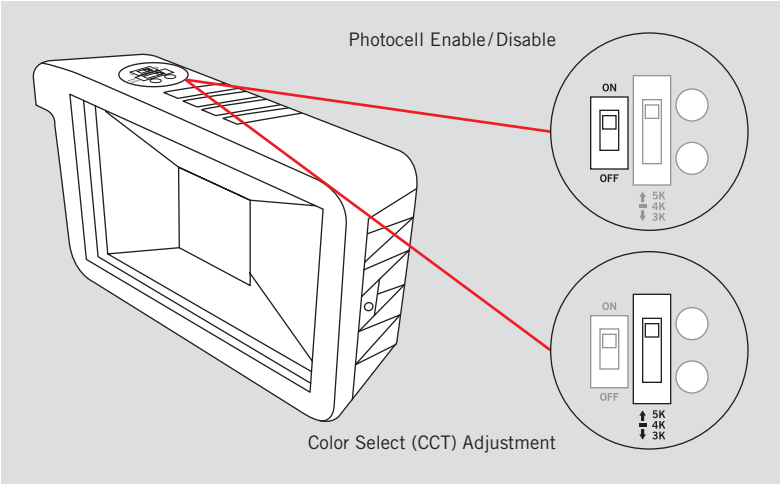
**Caution:** The electrical rating of this product is 120–277V. Installer must confirm that there is 120–277V at the fixture before installation.

#### PHOTOCELL ENABLE/DISABLE

This fixture is equipped with a dusk-to-dawn photocell behind the translucent knock-out (KO) cover. Adjust the dip switch to enable (ON) or disable (OFF) the photocell function (see illustrations to the right). Fixture comes preset with photocell enabled unless otherwise noted.

#### COLOR SELECT (CCT) ADJUSTMENT

This fixture is equipped with Color Select technology. There is an adjustable dip switch behind the translucent knock-out (KO) cover to change CCT between 5000K, 4000K, and 3000K (see illustrations to the right). Fixture comes preset at 5000K unless otherwise noted.



### ORDERING INFORMATION

CATALOG NUMBER	PACK QTY.	EASY CODE	UPC
KT-FLED100-R1A-UNV-8CSB-VDIM	1	JDK-34	843654129006



# KT-FLED100-R1A-UNV-8CSB-VDIM

COMPACT 100W GENERAL-PURPOSE LED FLOOD LIGHT

**CATALOG NUMBER BREAKDOWN**

## KT-FLED100-R1A-UNV-8CSB-VDIM /XXX

1
2
3
4
5
6
7
8
9
10
11
12
13
14

- 1** Keystone Technologies
- 2** Fixture Type
- 3** LED Lamp
- 4** Max Wattage
- 5** Shape
- 6** Style
- 7** Distribution
- 8** Mounting
- 9** CRI
- 10** Color
- 11** Color Select Designation
- 12** Dimming
- 13** Housing Color
- 14** Sensor Options

**2 Fixture Type**

<b>F</b>	Flood
<b>WP</b>	Wallpack

**5 Shape**

<b>R</b>	Rectangular
<b>C</b>	Circular

**6 Style**

<b>1</b>	Non-Cutoff
<b>2</b>	Full-Cutoff

**7 Distribution**

<b>A</b>	Wide (7 × 7)
<b>B</b>	Narrow
<b>C</b>	TBD Very Narrow

**8 Mounting**

<b>UNV</b>	Universal
<b>SF</b>	Slip Fitter
<b>KNL</b>	1/2" Knuckle

**9 CRI**

<b>8</b>	>80
<b>9</b>	>90

**10 Color**

<b>40</b>	4000K
<b>50</b>	5000K
<b>CS</b>	Color Select

**11 Color Select Designation**

<b>A</b>	3500K, 4000K, 5000K
<b>B</b>	3000K, 4000K, 5000K
<b>C</b>	3000K, 3500K, 4000K, 5000K
<b>D</b>	TBD

**12 Dimming**

<b>VDIM</b>	0-10V
-------------	-------

**13 Housing Color**

	Bronze
<b>B</b>	Black
<b>W</b>	White

**14 Sensor Options**

<b>/XXX</b>	No option
<b>/PIR</b>	Occupancy sensor included



# XFIT

# FLOOD LIGHT FIXTURES

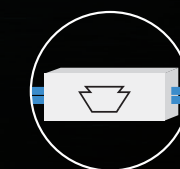
Powerful, efficient LED lighting with incredible versatility.



**COLOR SELECT TECHNOLOGY**  
ADJUSTABLE: 3000K - 4000K - 5000K



**BUILT-IN DUSK TO DAWN PHOTOCELL**  
OPERATES ONLY WHEN DARKNESS IS DETECTED FOR INCREASED CONTROL AND ENERGY EFFICIENCY



**BUILT-IN 120-277V KEYSTONE LED DRIVER**  
PROVIDES 0-10V DIMMING & AMPLE SURGE PROTECTION FOR INCREASED VERSATILITY AND RELIABILITY



**CONSOLIDATE SKUS WITH INTERCHANGEABLE MOUNTING OPTIONS INCLUDED**  
YOKE & KNUCKLE MOUNT INCLUDED FOR 15W, 35W, & 60W;  
SLIPFITTER & TRUNNION MOUNT INCLUDED FOR 75W & 100W  
ENSURES UNIVERSAL FIT



Two mounting options included with every fixture



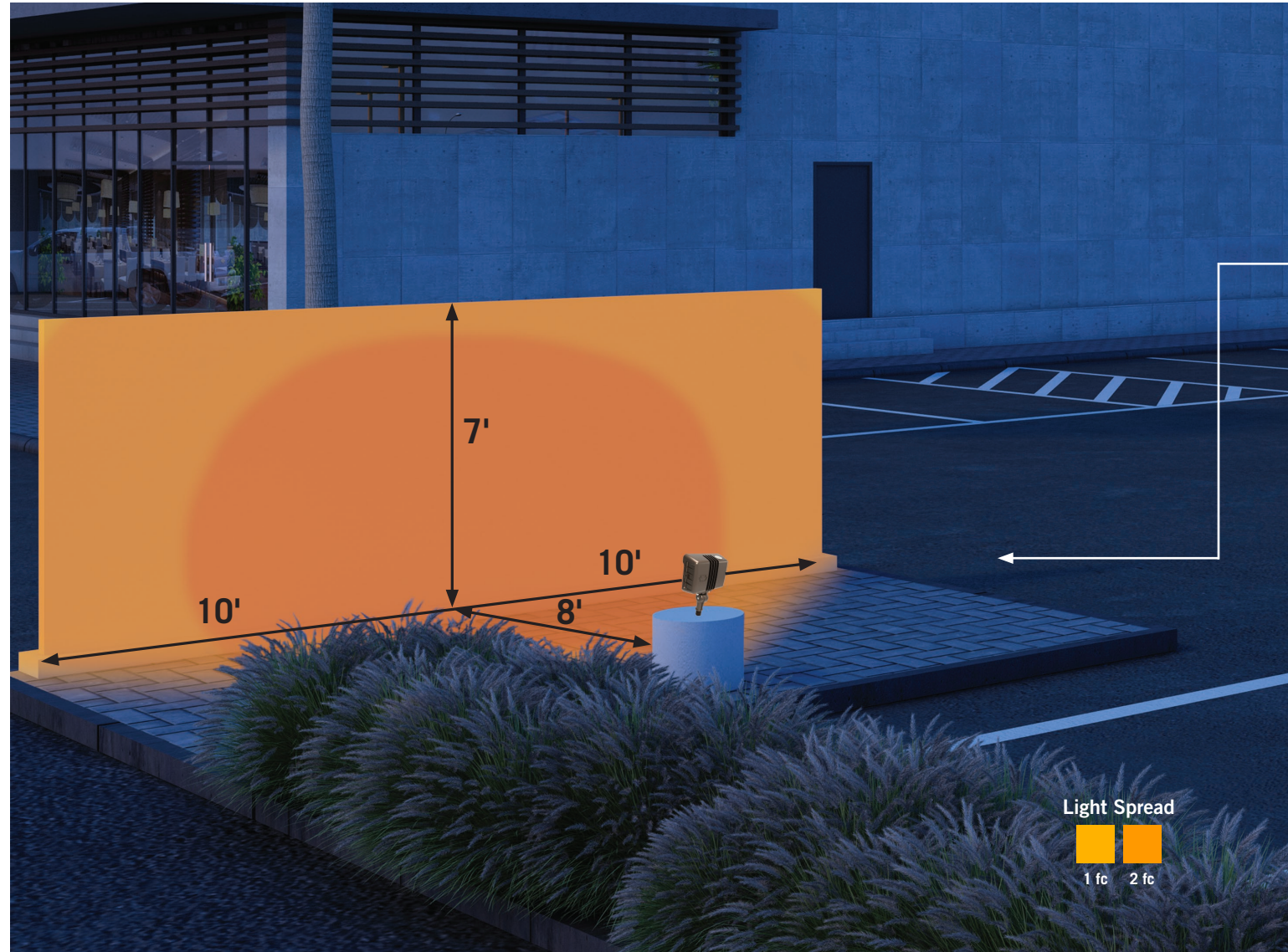
100,000 HOUR  
LED LIFETIME

IP65  
RATED

5 YEAR  
WARRANTY



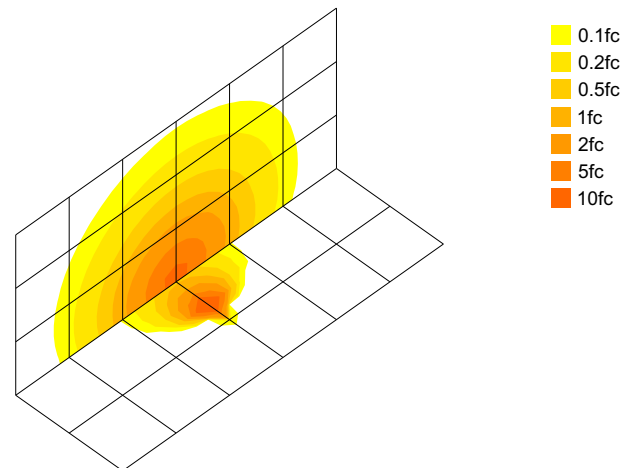
# XFIT FLOOD LIGHT FIXTURES



## FEATURES AND BENEFITS

- Ensures easy installation with included mounting hardware
- Adds energy savings with 0-10V dimming
- Designed with two dip switches (for photocell and color temperature adjustment) protected by a translucent plug
- Reduces SKUs with selectable color temperature and two mounting brackets
- 7'x7' NEMA beam spread
- Ensures proper heat sinking with sturdy and aesthetic design
- Protected from the elements and sprinkler systems with an IP65 rating
- Available in two housing options: Bronze & White. White available in 15W, 35W & 60W

15W Flood Light:  
Ground Mount at 6" above  
horizontal; 8' from wall



YOKE MOUNT, SHOWN  
IN BRONZE



SHOWN IN WHITE



PROTECTIVE TRANSLUCENT  
PLUG PROVIDES EASY ACCESS  
TO PHOTOCELL AND COLOR  
TEMPERATURE DIP SWITCHES