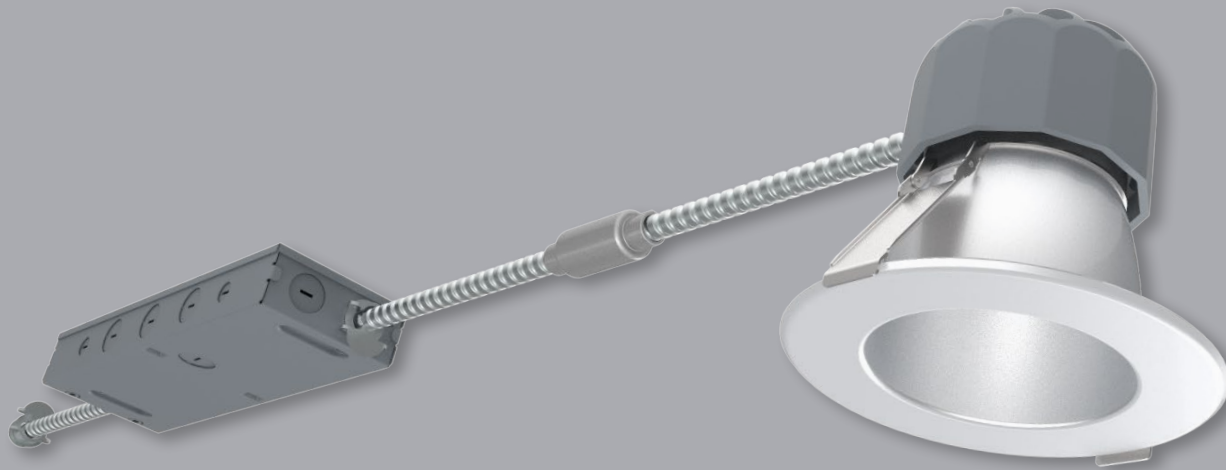


SPECFIT 4"

Retrofit Downlight



GREENCREATIVE



Mechanical – SPECFIT retrofits existing commercial housings. Spring action clips to accommodate ½" to 2" ceiling thicknesses. Fixture with remote driver installs and is accessible from below the ceiling.

Electrical – Universal 120-277V, 50/60 Hz driver. Three selectable lumen outputs using SelectDrive technology. 0-10V dimmable to 5% with low end cutoff. 12V auxiliary port with stand by power functionality for additional dimming and shut-off of field installed sensors and control systems.

Optical – Self flanged spun aluminum reflector. 45° optical cutoff. Field interchangeable optical lenses. Four beam distributions. Wall wash field installed accessory. COB technology ensures 3-step SDCM color uniformity in 2700K, 3000K, 3500K or 4000K CCT. Minimum 90 CRI. 97 CRI available in 3000K only.

Thermal – Die cast heat sink. L70 lifetime of 100,000 hours. Ambient temperature rated from -13°F to +95°F (-25°C to 35°C).

Compliance and Warranty – ETL Classified and Listed for damp locations. 5 year parts warranty for complete fixture.



PRODUCT ORDERING INFORMATION

Light Engine and Driver								Reflector	
Series	Light Engine	CRI	CCT	Driver	Voltage	Optical Distribution	Options ⁴	Reflector Shape	Finish
AD4 Specfit 4"	LES 500-700-1000lm	90 90+ CRI	27 2700K	DIM010 ¹ 0-10V Dim to 5%	UNV 120-277, 50/60Hz	MD ² Medium	SD347 347V Transformer	ADR4 4" Round Reflector	CC Clear Diffuse Trim and Flange
	LEM 1500-2000-2500lm	97 ³ 3000K only	30 3000K			VN Very Narrow	SD480 480V Transformer		CW Clear Diffuse Trim, White Flange
			35 3500K			NR Narrow	EM ⁵ Emergency Backup		WH Matte White Trim and Flange
			40 4000K			WD Wide			BL Matte Black Trim and Flange

¹ Dims to 5% with low end cutoff. Dimmer compatibility available on website / ² Medium Lens Optic comes standard, if other optic distribution selected the lens will ship separately and require field installation / ³ CRI97 is made to order in 3000K only and is not Energy Star listed / ⁴ Options are factory installed and come with the Light Engine and Driver / ⁵ EM cannot be combined with SD347 or SD480 option

Selection*

Ex: AD4-LES-9040-DIM010-UNV-MD-ADL4-CC

AD4

DIM010

UNV

ADR4

* A complete fixture consists of one light engine and driver and one reflector

ACCESSORY ORDERING INFORMATION

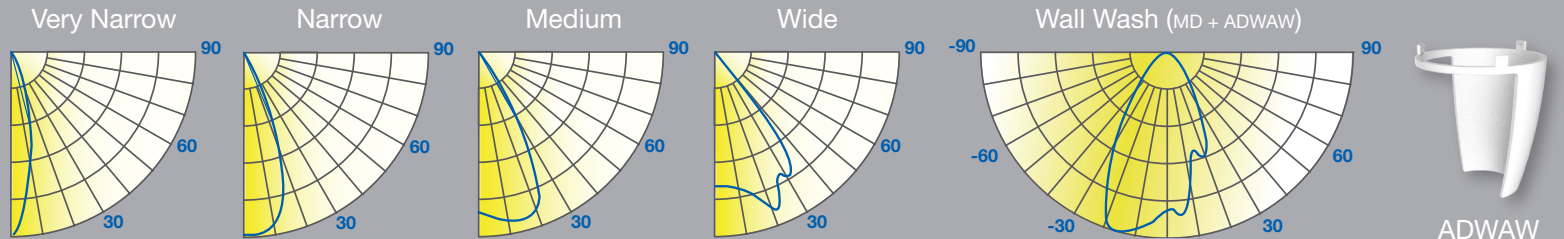
Model	Description
ADAWW	Wall Wash Accessory
NCPLATE/T	New Construction or Remodel Plate for T-grid Ceilings
NCPLATE	New Construction Plate for Stud / Joist Mounting

BEAM DISTRIBUTION*

VN	25°
NR	40°
MD	60°
WD	75°

ELECTRICAL SPEC

Light Engine	Input Voltage	Input Frequency	Input Current	Input Power	THD Power	Power Factor
LESXXX	120 / 277V	50 / 60Hz	0.115 / 0.047A	13W	<20%	>0.9
LEMXXX	120 / 277V	50 / 60Hz	0.270 / 0.114A	31.5W	<20%	>0.9



* Beam angles are only indicative, they may vary based on reflectors and light engine

LES (Small Light Engine and driver) - High / Medium / Low - 12.5 / 8.5 / 6.5W

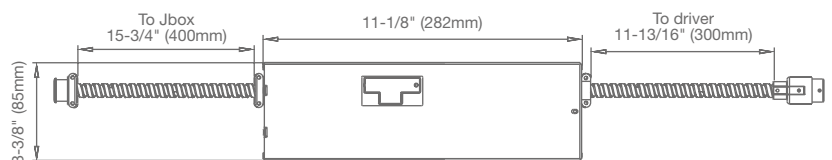
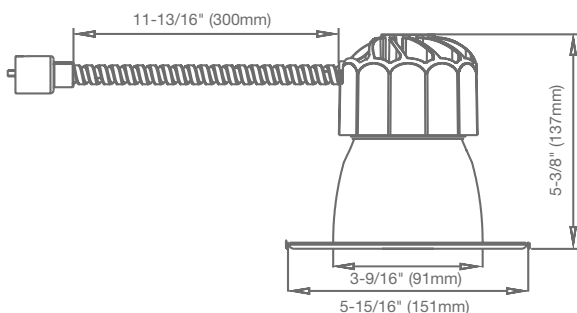
CCT	2700K						3000K						3500K						4000K					
	High		Medium		Low		High		Medium		Low		High		Medium		Low		High		Medium		Low	
Output**	Im	LPW	Im	LPW	Im	LPW	Im	LPW	Im	LPW	Im	LPW	Im	LPW	Im	LPW	Im	LPW	Im	LPW	Im	LPW		
Clear Diffuse	1000	80	700	82	500	77	1050	84	735	86	525	81	1100	88	770	91	550	85	1150	92	805	95	575	88
White	990	79	693	82	495	76	1040	83	728	86	520	80	1089	87	762	90	545	84	1139	91	797	94	569	88
Black	880	70	616	72	440	68	924	74	647	76	462	71	968	77	678	80	484	74	1012	81	708	83	506	78

LEM (Medium Light Engine and driver) - High / Medium / Low - 31.5 / 25.5 / 18W

CCT	2700K						3000K						3500K						4000K					
	High		Medium		Low		High		Medium		Low		High		Medium		Low		High		Medium		Low	
Output**	Im	LPW	Im	LPW	Im	LPW	Im	LPW	Im	LPW	Im	LPW	Im	LPW	Im	LPW	Im	LPW	Im	LPW	Im	LPW		
Clear Diffuse	2500	79	2125	83	1600	89	2550	81	2169	85	1632	91	2600	83	2210	87	1664	92	2650	84	2253	88	1696	94
White	2475	78	2104	82	1584	88	2525	80	2147	84	1616	90	2574	82	2188	86	1647	91	2624	83	2230	87	1679	93
Black	2200	70	1870	73	1408	78	2244	71	1909	75	1436	80	2288	73	1945	77	1464	81	2332	74	1983	77	1492	83

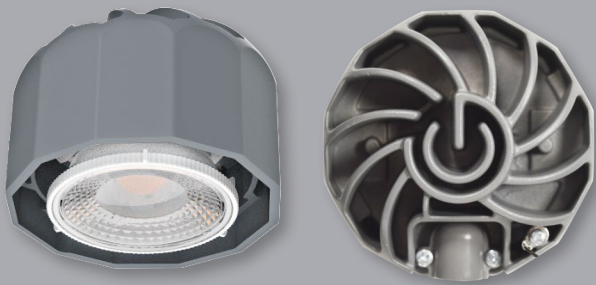
** Lumen output are based on rated lumens, for exact value please refer to the IES files

LINE DRAWINGS



Trim aperture: 3-9/16" (91mm)
 Flange Diameter: 5-15/16" (151mm)
 Height: 5-3/8" (137mm)
 Minimum Ceiling opening: 3-3/4" (96mm)

LIGHT ENGINES



The light engine is designed for maximum performance over its rated L70 life-time of 100,000 hours. The custom die cast aluminum heat sink effectively dissipates the thermal energy created by the industry leading chip on board (COB) LED technology. The COB delivers color consistency of 3-step SDCM with a minimum of 90 CRI. Put it all together and you get incredible color rendering over the life of the SpecFit fixture.

SELECTDRIVE DRIVERS

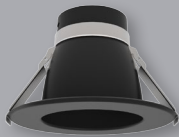
Every SPECFIT luminaire comes with SelectDrive technology, which allows for field selection of lumen output. Select from three different lumen output levels by sliding the selector switch on top of the 0-10V dimming driver with low end cutoff. A standard 12V auxiliary port with stand-by power function allow for additional field installation of sensors or control systems, offering even more lighting design flexibility.



CC



CW



BL



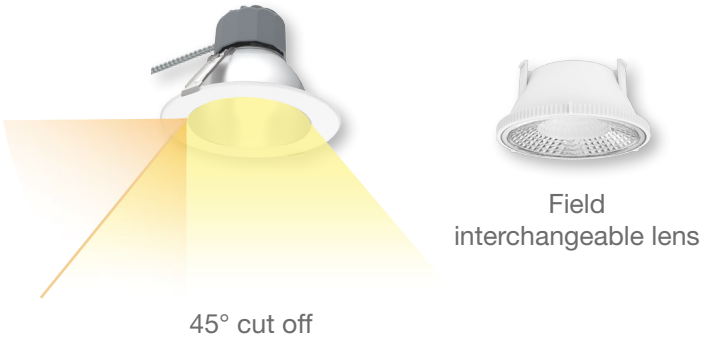
WH

REFLECTORS

The sturdy self-flanged spun Aluminum reflector is manufactured with performance in mind. The standard Clear Diffuse, Matte White or Matte Black finishes compliment almost any ceiling color. White painted flange is also available with Clear Diffuse for complete ceiling matching.

OPTICS

The reflector is designed with up to 45° optical cut off to help minimize aperture brightness in the ceiling and reduce glare. The multiple choice of beam angles thanks to its field interchangeable lenses allow for even more design flexibility. Choose from Very Narrow, Narrow, Medium or Wide optical distributions to maximize the lighting performance of any sized space.

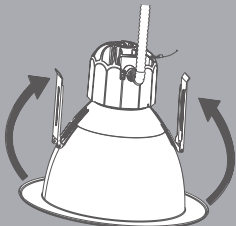


45° cut off

Field interchangeable lens

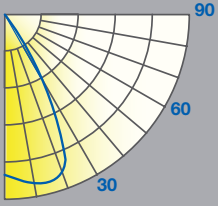
INSTALLATION

Spring-action clips allow for easy installation into commercial and architectural housings ranging from 3-6/8" - 5-1/8" (96 - 131mm). The quick connector between the driver and the light engines also helps reducing installation time.



PHOTOMETRY

AD4-LES9035-DIM010-UNV-MD-ADR4CC



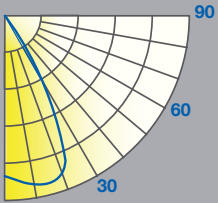
Lumens: 1206 lm
Power: 12.6 W
Efficacy: 96 lm/W
CRI: 90+
Spacing Criteria: 1.1
Beam Angle: 62°

Candlepower Distribution	
Angle (°)	Average (cd)
0	868
5	1005
15	1182
25	928
35	474
45	63
55	19
65	5
75	2
85	0
90	0

Initial Footcandles		
Height (ft)	fc	Diameter (ft)
4	50	5.8
6	22	8.7
8	13	11.6
9	10	13.05
10	8	14.5

Zonal Lumen Summary		
Zone	Lumens	%Fixt
0-30	849	70%
0-40	1122	93%
0-60	1194	99%
0-90	1206	100%

AD4-LEM9035-DIM010-UNV-MD-ADR4CC



Lumens: 2680 lm
Power: 31.4 W
Efficacy: 84 lm/W
CRI: 90+
Spacing Criteria: 1.1
Beam Angle: 57°

Candlepower Distribution	
Angle (°)	Average (cd)
0	2269
5	2329
15	2774
25	2050
35	898
45	134
55	32
65	4
75	0
85	0
90	0

Initial Footcandles		
Height (ft)	fc	Diameter (ft)
0	142	4.3
5	63	6.5
10	36	8.6
20	28	9.7
30	23	10.8

Zonal Lumen Summary		
Zone	Lumens	%Fixt
0-30	1939	74%
0-40	2480	94%
0-60	2623	100%
0-90	2680	100.0%

