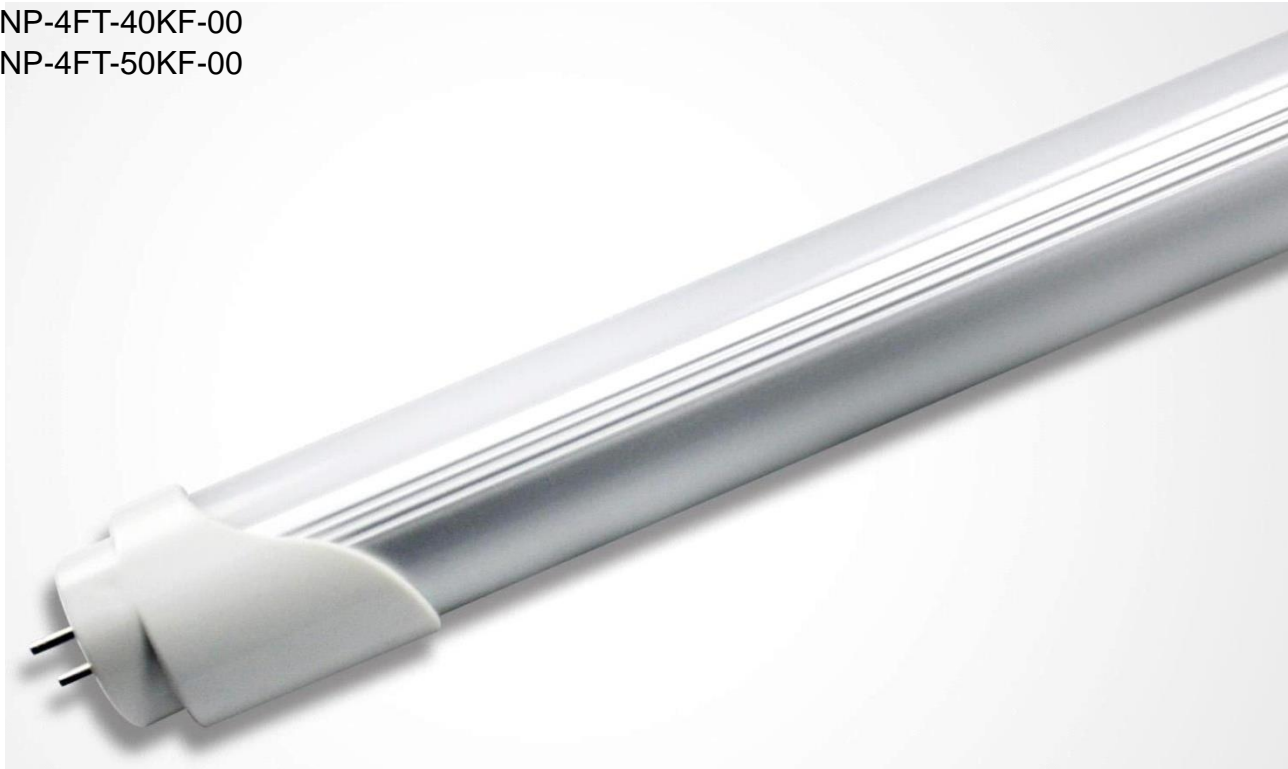


iBright™ PNP T8 LED Tube

T8PNP-4FT-40KF-00
T8PNP-4FT-50KF-00



Product Description

iBright™ Plug&Play T8 LED Tubes fit into existing linear fluorescent fixtures and provide appropriate light levels by utilizing an existing fluorescent ballast. No wiring is required when replacing T8 fluorescents with the compatible LED Tube, which helps to reduce maintenance and labor costs.

The driver allows iBright™ Plug&Play T8 LED Tube to be compatible with virtually all standard fluorescent ballasts, Magnetic ballast and Electronic ballast.

With longer lifespan and higher brightness, iBright™ Plug&Play T8 LED Tubes can be widely used to replace the traditional fluorescent tube lights.

Performance Summary

Power Consumption: 16W

Input Voltage: 100-277 VAC

Luminous Efficacy: 100 lm/W

Lumens: 1600 lm

CCT: 4000 K, 5000 K

CRI: >80

PF: >0.95



Tested Compatible Ballasts for iBright™ PNP IPS T8 LED Tubes

GE	
GE132MAX-N/ULTRA	GE232MAX-N/ULTRA
GE132MAX-L/ULTRA	GE232MAX-L/ULTRA
GE132MAX-H/ULTRA	GE232MAX-G-N
GE132MAX-G-N	
PHILIPS	
REB-2P32-SC	
IOPA-3P32-N	

Product Specifications

CONSTRUCTION & MATERIALS	
Length	4ft (1.2m)
Housing	Extrusion Aluminum and PC Diffuser
Tube Type	T8
Base Type	G13
Lens Type	Frosted

ENVIRONMENTAL SYSTEM	
Work Environment	Indoor use (applicable for dry environments)
Operating Temperature	-20~40°C (-4~104°F)

OPTICAL SYSTEM	
Luminous Flux	1600 lm
Color Temperature	4000 K, 5000 K
CRI	>80
Beam Angle	120°

ELECTRICAL SYSTEM	
Power Consumption	16W
Input Voltage	100-277VAC
Frequency	50-60 HZ
Power Factor	>0.95

REGULATORY & VOLUNTARY QUALIFICATIONS	
DLC/ETL	
CE, RoHS	



USER GUIDE

NOTE:

Please read this entire manual to fully understand and safely use this product.

Specifications are subject to change without notice. Please visit www.atgelectronics.com for the most recent user guide versions.

Included in this Box

ATG Electronics® iBright™ T8 LED Tube (plug and play), 1 PCs

User Guide, 1 Set

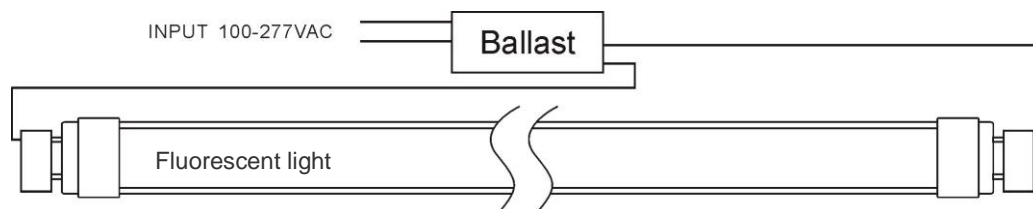
Important Instructions

The LED tube works directly at 100~277VAC. The installer must determine whether they have 100~277VAC at the luminaire before installation.

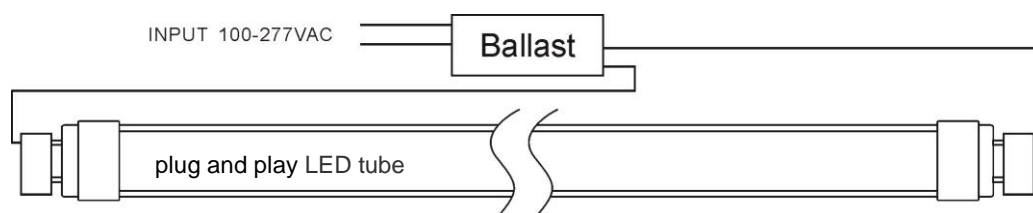
Installation Steps

Plug and Play procedure

1. Turn off the power to the light fixture at the breaker panel before installation.
2. Open the diffuser from the light fixture.
3. Remove the fluorescent tubes. Please dispose of these items properly as they contain mercury.



4. Put LED tube into the lighting fixture.



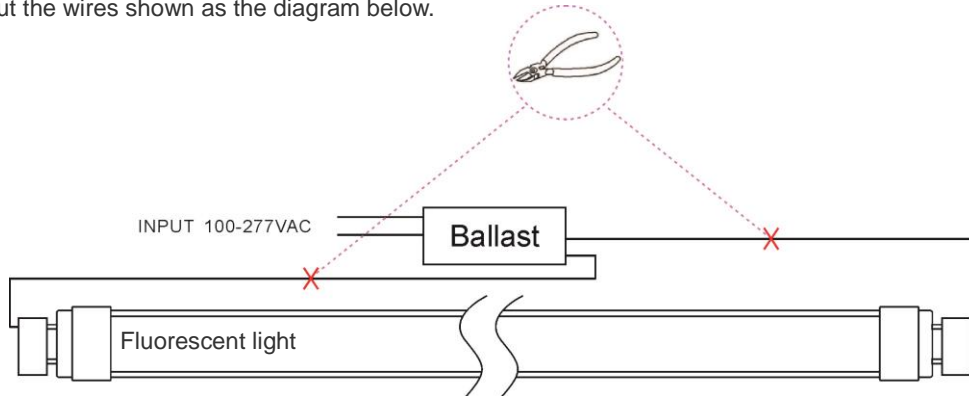
5. Install the LED tubes, close the diffuser.
6. Turn on the Power.



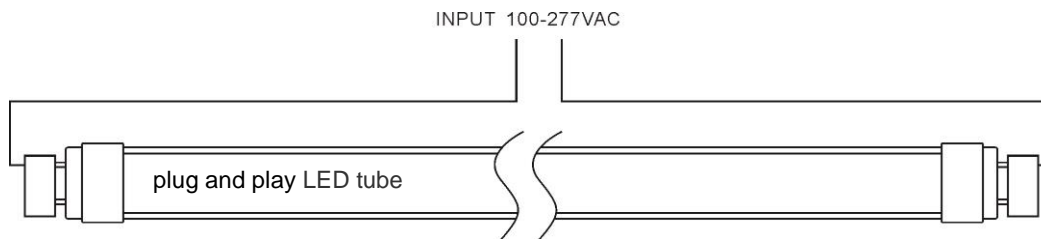
Retrofit Procedure

1. Turn off the power to the light fixture at the breaker panel before installation.
2. Open the diffuser from the light fixture.
3. Remove the fluorescent tubes. Please dispose of these items properly as they contain mercury.

4. Cut the wires shown as the diagram below.



5. Make the new wire connect to branch circuit shown as the diagram below.
6. Replace the cover over the wiring channel.
7. Install the LED tubes, close the diffuser.



8. Turn on the Power.

